

# Healthy Signs

National Center for Deaf Health Research  
Rochester Prevention Research Center

September  
2014



## Deaf Strong Hospital 2014

Educating another generation  
of future doctors

### Bridges to the Doctorate

A collaboration between  
UR and RIT

### HL2

HL2 Co-Chair Don W. Bataille  
is Acknowledged

HLAA Rochester Gives Back

### NCDHR Happenings

Visitors from Japan: Eager to  
learn about RPRC's research  
and education

Farm Stand 2014: Save the  
date for the Harvest Festival





## UNIVERSITY OF ROCHESTER SCHOOL OF MEDICINE & DENTISTRY DEAF STRONG 2014 H O S P I T A L



This year, RPRC: NCDHR Graduate Research Assistant Ian DeAndrea-Lazarus was the lead coordinator of Deaf Strong Hospital 2014. With a new design and updated curriculum, the event was a big success, and the response from the medical students, community members, and guest lecturers was positive. Ian is a first year medical student this year at the University of Rochester School of

Medicine and Dentistry. Ian was a main component in pulling the entire event together, with the help of the rest of the RPRC:NCDHR staff, and also gave a lecture about Deaf culture to his classmates, including some of his own personal experiences as a Deaf person navigating the healthcare system.

Many of the RPRC:NCDHR staff and actors at the event noticed the change in attitudes of the first year medical students. Many of them already knew some sign and seemed to be more Deaf-friendly. This was attributed to the interactions and teachings they have already had with Ian, their classmate. After the event, Ian informed NCDHR that the students stated this event helped to open “their eyes to the challenges Deaf people experience in healthcare.” Like previous years, this event has helped to “spread awareness to a good number of future physicians who will be able to apply their experience to future interactions with Deaf patients.” This is truly a warming thought for medicine in the Rochester area and any other areas these future physicians will travel to.

RPRC:NCDHR would like to thank Ian for all his hard work to make this event a success. We wish him the best of luck as he progresses towards becoming a physician. We would also like to thank the Deaf community actors for coming and being the face of this event! Without them, this would not be possible.

To learn more about Deaf Strong Hospital, check out RPRC:NCDHR’s website,

[www.urmc.edu/ncdhr/information/training/deaf-strong-hospital.cfm](http://www.urmc.edu/ncdhr/information/training/deaf-strong-hospital.cfm)

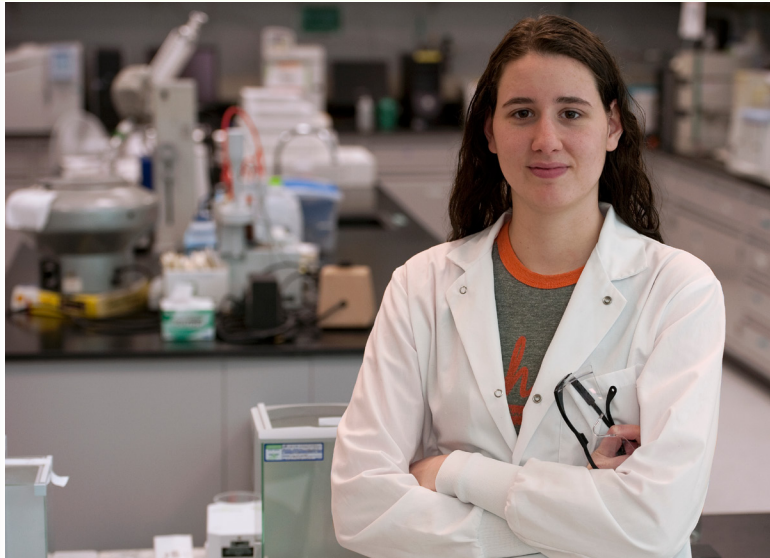
For questions about Deaf Strong Hospital, email [NCDHR@urmc.rochester.edu](mailto:NCDHR@urmc.rochester.edu).





## Rochester Bridges to the Doctorate:

A collaboration between UR and RIT



**Rochester Bridges to the Doctorate**

NATIONAL TECHNICAL INSTITUTE FOR THE DEAF | UNIVERSITY OF ROCHESTER  
ROCHESTER INSTITUTE OF TECHNOLOGY

Deaf people and people with hearing loss are strikingly underrepresented among doctoral-prepared biomedical and behavioral scientists in the U.S. The long-term goal of the Rochester Bridges Program is to increase the number of Deaf students and students with hearing loss who go on to research careers in the behavioral and biomedical sciences. RPRC is working with faculty from NTID to help bridge between RIT and UR programs. The objective of this project is to develop, implement, and evaluate a model program, which integrates individual and institutional activities to improve students' preparation as they advance toward completion of doctoral degrees in biomedical and behavioral sciences.

Click on the picture below to watch the vlog and see Gloria's perspective of the program.

Gloria Wink, the first Bridges scholar, has just completed the first year of the program. Gloria is currently working on her Master's degree in Environmental Science at RIT. Three new Bridges scholars will be accepted into the program every year.

For more information about the program, go to [www.deafscientists.com](http://www.deafscientists.com).



## HL2 Co-Chair Don W. Bataille is Acknowledged Don receives the 2014 Presidents Award

Bridges to the  
Doctorate

HL2

NCDHR  
Happenings

Donald W. Bataille, AIA, co-chair of HL2, one of RPRC's community committees, received the 2014 President's Award from the Hearing Loss Association of America (HLAA). The award is given to a person with a long and diligent history of making the lives of people with hearing loss better.

Don also co-authored the 2013 HL2 Summary Report establishing health research priorities of people with hearing loss. He is an RPRC National Community Committee Delegate and serves on the RPRC executive committee and Local Partner Advisory Board (LPAB).



Don lost his hearing suddenly in 1998 and discovered the HLAA Rochester Chapter. He became involved and served as a chapter leader and later as the chapter Board president for two terms. He chaired the Operations, By-Laws, Strategic Planning and Professional Advisory Committees. Don has supported the HLAA Walk for Hearing in Rochester as a team captain and sponsor and currently serves on the HLAA NY State Association as a PAC member. He has presented educational programs on Hearing Loss in the Workplace, Room Acoustics, ADA-Communication Requirements and Hearing Loop Technology, as well as presented national workshops at HLAA Conventions and an HLAA webinar on Classroom Acoustics.

Don said this award is as much about the HLAA Rochester Chapter as it is about an HLAA Chapter member receiving the award. He said you can't have one without the other. He continued:

"The Chapter provides its members the understanding, education, and most important, the encouragement to embrace the realities of hearing loss. It is the chapter member's efforts and accomplishments that define their HLAA Chapter.

"This is an exciting time to be an HLAA member. We are changing the culture of hearing loss and addressing hearing loss issues by replacing past attitudes with an attitude framed with discovering. HLAA Chapters empower each person with hearing loss to better understand their hearing loss by discovering what we can all do as a cohesive organization, discovering technology and tools that make a difference and discovering opportunities of choice. For me, this award is an opportunity to discover more! Thank you."

### HLAA Rochester Gives Back

Some members of RPRC's Healthy Living with Hearing Loss (HL2) are also members of HLAA Rochester. HLAA Rochester awarded eight scholarships to local high school seniors who are Deaf or have hearing loss to help with the cost of their college education. All eight students graduated from the Rochester School for the Deaf.

This scholarship program began in 1996 with a grant from Mr. & Mrs. J. Stuart MacDonald. With this year's awards, HLAA Rochester has awarded a total of \$78,500 to 94 recipients. Today most of the scholarship funds come from money raised at HLAA Rochester's annual Walk4Hearing held in May of every year.

These eight recipients are all amazing young people who are an inspiration to all of us!



Bridges to the  
Doctorate

HL2

NCDHR  
Happenings

## Visitors from Japan

### Eager to learn about RPRC's research and education

On July 9, RPRC /NCDHR hosted a few visitors from Japan. Mayumi Shirasawa, Ph.D, and Makiko Miyatani came to RPRC /NCDHR to learn more about our research and education programs. Dr. Shirasawa has been a Research Scholar at NTID/RIT for the past year, and is an Associate Professor at National Tsukuba University of Technology in Japan. Ms. Miyatani is a pharmacist and researcher.

While at NTID/RIT, Dr. Shirasawa has been studying how to support deaf and hard of hearing students in higher education settings. Ms. Miyatani came to visit the U.S. from Japan, and was also very eager to learn more about education of deaf people and people with hearing loss related to medical, pharmacy, and healthcare professions. Ms. Miyatani is hard of hearing, and is conducting her own research on communication between healthcare providers and people with hearing loss. Her objective is to learn how to improve healthcare visits for people with hearing loss.



Dr. Shirasawa said that in Japan, more and more deaf and hard of hearing students are pursuing careers in non-traditional areas such as medical, legal, STEM (science, technology, engineering, and math), so supporting those students has become very important. She is involved in supporting a team of deaf medical students in Japan, and will take what she has learned here back to her work in Japan.

The RPRC/NCDHR team learned so much from this visit as well. We were impressed with communication and translation of multiple languages: ASL, English, and Japanese! RPRC/NCDHR was thrilled to have them visit and wishes them the best of luck in their future endeavors.

## Farm Stand 2014

A wrap up to a good summer

On behalf of Foodlink, NCDHR, and the Rochester Recreation Club for the Deaf (RRCD), we would like to say **THANK YOU** to all who supported our Farm Stand this summer at RRCD. This stand was set up as part of both Rochester's Community

Transformation Grant - H.E.A.R.T. (Health Engagement and Action for Rochester's Transformation) and the Department of Agriculture's Fresh Connect Grant. The purpose of this stand was to provide underserved communities in the greater Rochester area, with access to fresh, local produce at affordable prices. This is the third year the Farm Stand has operated at the RRCD and we look forward to serving the Deaf community again next year.

For this year's closing event, we will be hosting a **Harvest Festival** on **Saturday, October 25th from 10am-1pm**. The RRCD will be hosting their 10th Annual Steer Roast and Foodlink will be joining us to host a **Cooking Demonstration**. We hope you can join us and pick up some squash or pumpkins for your very own harvest feast!

### Live Cooking Demo!

#### Harvest Festival

Saturday, October 25th  
10am-1pm

*Rochester Recreation Club for the Deaf*





**Mission of NCDHR:** To promote health and prevent disease in the Deaf and hard of hearing populations through community-based participatory research.



UNIVERSITY of  
**ROCHESTER**  
MEDICAL CENTER



265 Crittenden Blvd. • Box 708 • Rochester, NY 14642  
Phone: (585) 275-0560 • VP: (585) 286-2776 • Fax: (585) 276-1256  
[www.urmc.edu/ncdhr](http://www.urmc.edu/ncdhr) • [ncdhr@urmc.rochester.edu](mailto:ncdhr@urmc.rochester.edu)

This newsletter was supported by Cooperative Agreement Number U48-DP-001910 from the Centers for Disease Control and Prevention (CDC). The findings and conclusions in this newsletter are those of the author(s) and do not necessarily represent the official position of the CDC.